

# R

RENAISSANCE®  
PARIS NOBEL TOUR EIFFEL HOTEL

# THE PERFECT PLACE TO MEET





# UNIQUE AND EXCLUSIVE

## **PARIS JE T'AIME**

At the Renaissance Nobel Tour Eiffel Hotel, unexpected discoveries, hidden gems and authentic experiences will make every guest's stay an adventure. Walking distance from the best view over the Eiffel Tower (4 minutes), our dynamic neighborhood offers the perfect setting for events of all sizes. Over 300 square meters of event space, 122 rooms and suites for an unforgettable stay.

# NICE AND COZY

## **CLASSIC ROOM**

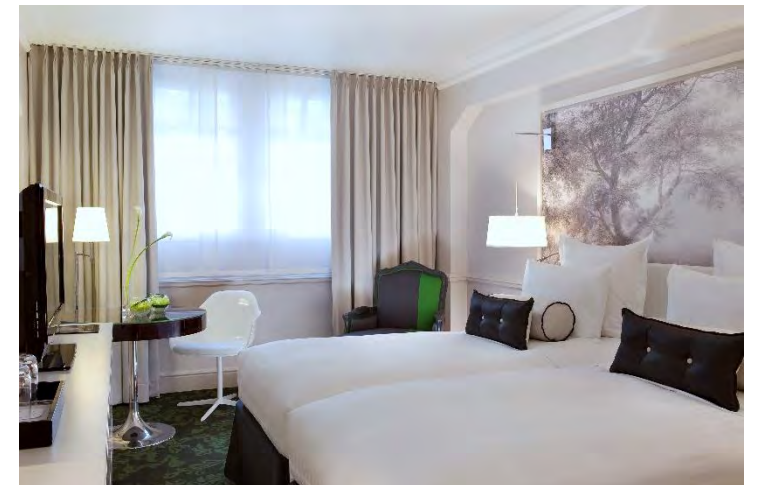
Classic room : 20 sqm

- City view
- Double bed
- Capacity: 1 or 2

## **DELUXE ROOM**

Deluxe View Room : 20-24 sqm

- City view
- Queen bed, king bed or twin beds
- Capacity: up to 2 people
- Connecting rooms on request



# QUIET AND VERDUROUS

## **DELUXE GARDEN VIEW ROOM**

Deluxe view room : 20-24 sqm

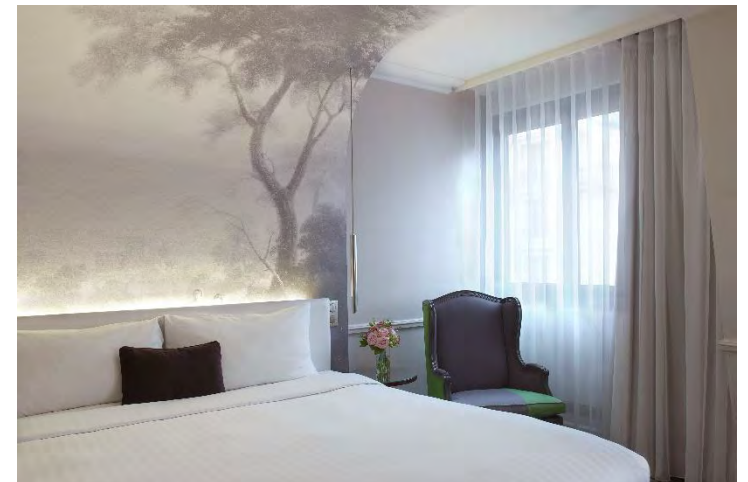
- Garden view
- Queen bed, king bed or twin beds
- Capacity: up to 2 people
- Connecting rooms on request
- 4 rooms for disabled people with access to the garden



## **PRESTIGE ROOM**

Prestige room: 23-28 sqm

- Garden or city view
- King bed
- Capacity: up to 3 people
- Crib or extra bed available on request
- Connecting rooms on request



# GARDEN OR CITY VIEW?

## **JUNIOR SUITE GARDEN VIEW**

Junior suite : 30-35 sqm

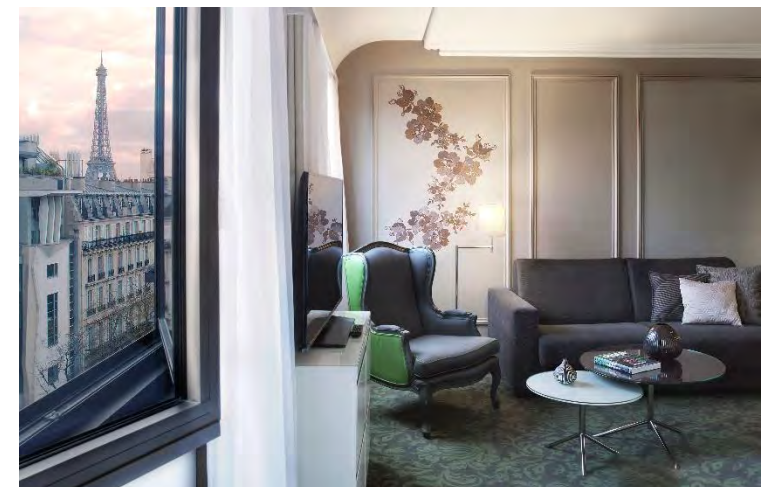
- Garden view
- King size bed
- Maximum capacity: 3 people
- Crib or extra bed available on request
- Sofa
- Nespresso coffee machine



## **JUNIOR SUITE EIFFEL TOWER VIEW**

Junior suite : 30-35 sqm

- Eiffel Tower view (2 rooms) or city view
- King size bed
- Maximum capacity: 3 people
- Crib or extra bed available on request
- Sofa
- Nespresso coffee machine



# FAMILY FIRST

## **FAMILY SUITE**

Family suite : 30-35 sqm

- Garden view or Paris' rooftops
- King size bed
- Maximum capacity: 4 people
- Sofa bed
- Nespresso coffee machine



## **DUPLEX SUITE**

Junior suite : 40-45 sqm

- Garden view
- King size bed
- Maximum capacity: 4 people
- Sofa bed
- Nespresso coffee machine

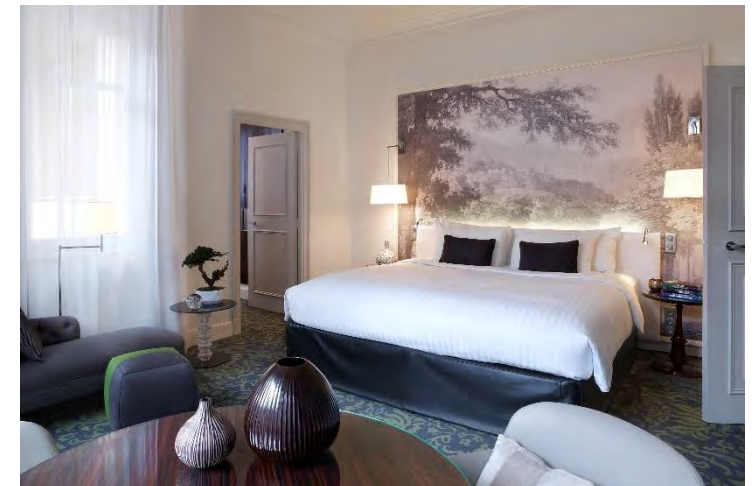


# FRENCH ROMANCE

## **MAGNOLIA SUITE**

Presidential Suite : 52 sqm

- Balcony Magnolia view
- King size bed
- Maximum capacity: 3 people
- Crib or extra bed available on request
- Nespresso coffee machine





# MEETING

<u>METING ROOM</u>	Theatre	Oval table	Cocktail	3 course meal	Seated buffet	Stand-up buffet
<b>KIOSQUE</b> 20 sqm	N.A	6	10	6	6	10
<b>AZALEE 1+ 2</b> 45 sqm	20	16	35	20	20	35
<b>AZALEE 1</b> 21 sqm	10	8	10	8	8	10
<b>AZALEE 2</b> 24 sqm	10	12	12	12	12	12
<b>ORCHIDEE</b> 20 sqm	N.A	8	12	10	10	12





# CONFIDENTIAL



Setup	MAGNOLIA Conference	MAGNOLIA Lounge	MAGNOLIA Conference et Lounge
Theatre	84		
School	60		
Cabaret	48		
U Shape	30		
Rectangular Table	42		
Cocktail		100	160
3 courses meal		72	144
Seated buffet		54	99



# PACKAGES



## **FULL-DAY SEMINAR PACKAGE FROM 160€\***

Rental from 9 am to 6 pm

- 1 screen, 1 video projector, 1 paperboard, Wi-Fi, notepads, pen, candy and mineral water
- Welcome coffee: mini-pastries, fruit juice and hot beverages
- 2 coffee breaks with pastries or snacks, fresh fruit, fruit juice, coffee and tea
- 3-course lunch menu or standing finger buffet luncheon (from 20 persons) coffee, sweets, wine and mineral water

*\* Price per person*

*A supplement may be applied depending on the number of people and the meeting space*

### **These packages are green!**

Recycled and recyclable materials. Protect the environment: e-proposal, tables and buffets without tablecloths, wastebaskets with trash separation in the meeting room, e-invoice. Prices per person, VAT and service included

## **HALF-DAY SEMINAR PACKAGE FROM 150€\***

Rental from 9 am to 1 pm or from 2 pm to 6 pm

- 1 screen, 1 video projector, 1 paperboard, Wi-Fi, notepads, pen, candy and mineral water
- Welcome coffee: mini-pastries, fruit juice and hot beverages (morning only)
- Coffee break with pastries or snacks, fresh fruit, fruit juice, coffee and tea
- 3-course lunch menu or standing finger buffet luncheon (from 20 persons) coffee, wine and mineral water

# SUSTAINABILITY

## **HOW TO REDUCE OUR ENVIRONMENTAL FOOTPRINT TOGETHER?**

1 - You book a meeting

2 - You choose from our partner, South Pole, one of the three emissions reduction projects

3 - We calculate the carbon footprint and purchase carbon credits from South Pole on your behalf

### Projects to choose from

#### **1 - Kariba Forest Protection Zimbabwe**

Saving forests, protecting wildlife and changing lives.

#### **2 - Afognak Island Forest Preservation USA**

Permanent protection for Afognak Island's Sitka spruce forests.

#### **3 - Vichada Forest Restoration Colombia**

Transforming fragile savannah lands into biodiverse forests to combat climate change.



# RENAISSANCE PARIS NOBEL TOUR EIFFEL

55 – 57 Avenue Raymond Poincaré, 75116 PARIS

## GET IN TOUCH!

Booking up to 9 rooms:  
T + 33 (0) 1 40 99 81 00

@ [france.reservations\\_marriotthotels@marriott.com](mailto:france.reservations_marriotthotels@marriott.com)

Sales Department:  
T + 33 (0) 1 44 05 66 40

@ [renaissancetoureiffel@marriott.com](mailto:renaissancetoureiffel@marriott.com)

RENAISSANCE PARIS NOBEL TOUR EIFFEL HOTEL  
55 – 57 AVENUE RAYMOND POINCARE,  
75 116 PARIS - FRANCE  
T + 33 (0) 1 44 05 66 00

[PRIVATE TOUR](#)

[Web Site](#)

