



# BUSINESS UNUSUAL IN THE HEART OF PROVIDENCE

Discover a unique hotel experience that melds timeless architecture with chic modern design at the Renaissance Providence Downtown Hotel. Since the 1920s, the building has been a place of assembly, originally housing a Masonic temple. Now a new era of professionals meet in our nine deluxe, integrated spaces featuring state-of-the-art technology, a professional events and catering team and capacity for up to 400 guests. Work or network in our comfortable creative spaces, where original Masonic columns complement décor that inspire students of the Rhode Island School of Design. From our stylish guest rooms with pillow-top mattresses, 49-inch flat-screen TVs and complimentary Wi-Fi to the innovative flavors of the Public Kitchen & Bar, meetings, events and group stays here are anything but usual.

- 264 upscale rooms and 8 suites, all with modern amenities and sophisticated décor
- Upgrade to concierge-level rooms and suites for exclusive access to our Club Lounge
- 9 venues, 14,540 sq. ft. of total meeting space
- Host full company events for up to 400 in our Symphony Ballroom
- Professional catering for delicious event lunches and snacks
- Audiovisual rentals and service available
- Meeting Services app
- Quality dining and cocktails at Public Kitchen & Bar
- 24/7 fitness center with Life Fitness treadmills, Lifecycle bikes and free weights
- Close to T.F. Green Airport
- Easy access to Brown University, Providence College and Providence Performing Arts Center



RENAISSANCE PROVIDENCE DOWNTOWN HOTEL  
5 Avenue of the Arts, Providence, RI 02903 USA  
t: 401.919.5000 • [Marriott.com/PVDBR](http://Marriott.com/PVDBR)

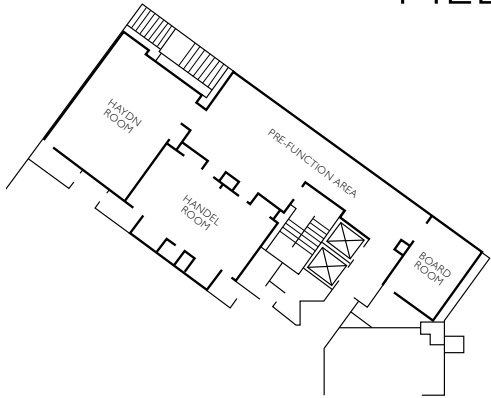
© 2018 Marriott International, Inc. All Rights Reserved.

**R**  
**RENAISSANCE**<sup>®</sup>  
PROVIDENCE DOWNTOWN HOTEL



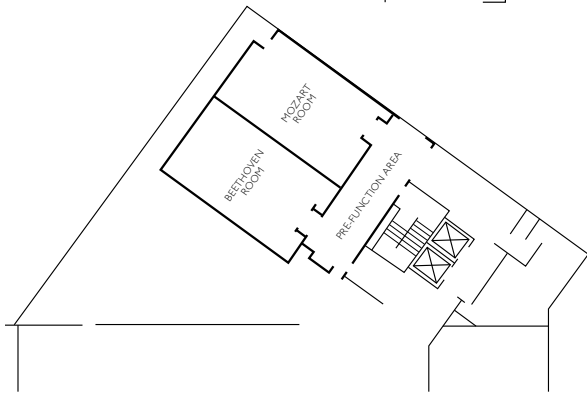
# MEETING & EVENT SPACE

## TEMPLE LEVEL MEETING ROOMS



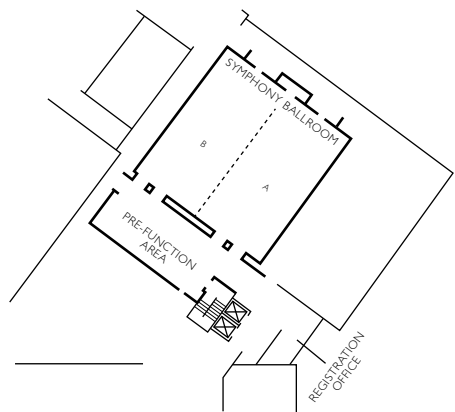
MEETING ROOM	WxL	SQ FT	RECEPTION	THEATER	SCHOOL	ROUNDS	TRADE SHOW EXHIBIT 8x10 / 10x10
Boardroom	16x24	384	-	-	-	-	Conference for 12
Handel Room	20x36	720	80	70	40	50	-
Haydn Room	29x36	1,044	106	90	55	60	-
Pre-Function Area	24x34	816	-	-	-	-	-

## MEZZANINE LEVEL MEETING ROOMS



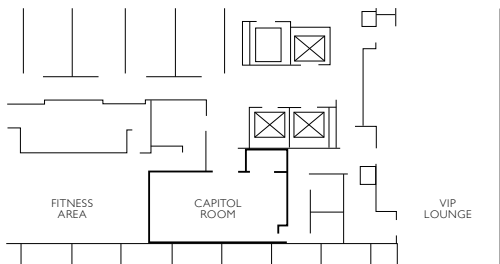
MEETING ROOM	WxLxH	SQ FT	RECEPTION	THEATER	SCHOOL	ROUNDS	TRADE SHOW EXHIBIT 8x10 / 10x10
Beethoven Room	24x42x9	1,008	100	80	40	60	-
Mozart Room	24x42x9	1,008	100	80	40	60	-
Pre-Function Area	-	775	-	-	-	-	-

## BALLROOM LEVEL MEETING ROOMS



MEETING ROOM	WxLxH	SQ FT	RECEPTION	THEATER	SCHOOL	ROUNDS	TRADE SHOW EXHIBIT 8x10 / 10x10
Symphony Ballroom	70x70x14	4,900	550	400	240	360	30 / 24
Symphony Ballroom A	35x70x14	2,450	245	200	140	180	15 / 12
Symphony Ballroom B	35x70x14	2,450	245	200	140	180	15 / 12
Pre-Function Area	22x55x9	1,200	-	-	-	-	-
Registration Office	10x25	250	-	-	-	-	-

## CLUB LEVEL MEETING ROOM



MEETING ROOM	WxL	SQ FT	RECEPTION	THEATER	SCHOOL	ROUNDS	TRADE SHOW EXHIBIT 8x10 / 10x10
Capitol Room	18x32	576	-	-	-	-	Conference for 16