



#### ACCOMMODATIONS

40 floors • 1,161 rooms • 44 suites • 62 meeting rooms

#### RESTAURANTS & LOUNGES

Woven + Bound offers delicious American Brasserie Cuisine inspired by the diverse culture of Chicago for breakfast, lunch and dinner • 2121 Pantry features freshly prepared sandwiches, salads and quick bites 24/7 • M Club Lounge provides flexible spaces to work, connect and recharge with 24-hour accessibility

#### RECREATION & LEISURE

State-of-the-art fitness center

#### ATTRACTIONS

Shedd Aquarium • Museum Campus • Millennium Park • New Maggie Daley Park • Northerly Island • Soldier Field • U.S. Cellular Field • Wrigley Field • Navy Pier • Art Institute of Chicago • Lincoln Park Zoo • Adler Planetarium • Field Museum • Grant Park • Glessner House Museum • Clarke House Museum

#### GUEST SERVICES

Business Center • Daily newspaper delivery • 24 hour room service • Copy/fax service • Valet parking

#### MEETINGS

Over 93,000 square feet of total meeting space • Both the Grand Horizon Ballroom and Great Lakes Ballroom offer over 25,000 square feet of space and can accommodate up to 2,100 people • 48 breakout rooms

#### LOCATION

Conveniently located in Chicago's revitalized South Loop area, the center for the city's latest modern developments and a hub for business and events

**MARRIOTT MARQUIS CHICAGO**  
2121 SOUTH PRAIRIE AVENUE CHICAGO, IL 60616  
312.824.0500 CHICAGOMARQUISMARRIOTT.COM  
f/MarquisChi @Marquis\_Chicago @Marquis\_Chicago  
© 2017 Marriott International, Inc.

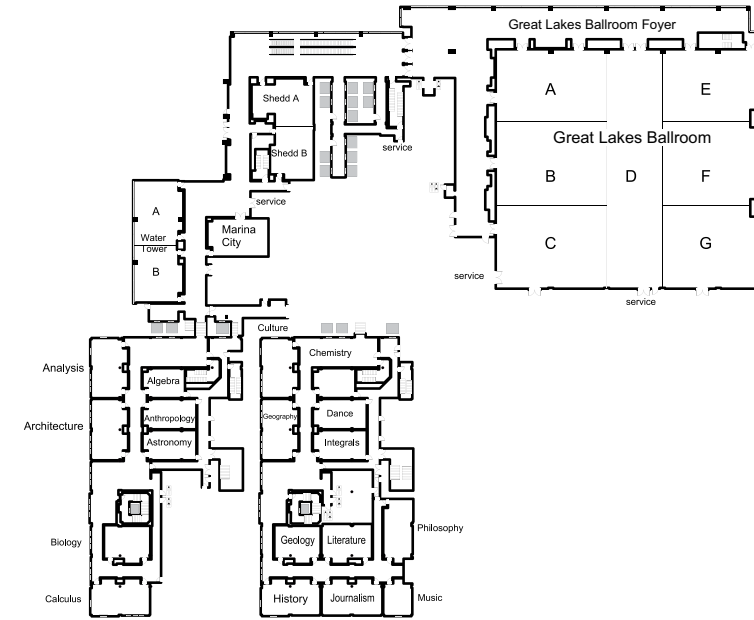


**EMPOWERING  
NEW PERCEPTIONS.**  
IN THE CITY OF BIG SHOULDERS.

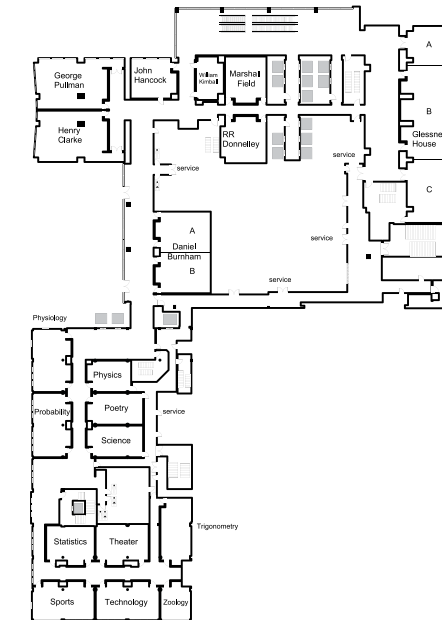
## LEVEL 2

Meeting Room	DIMENSIONS			CAPACITY					
	Dimensions (LxWxH)	Area (Sq. Feet)	Theater	Schoolroom	Conference	U-Shape	Reception	Banquet (No Stage)	Banquet (With Stage)
Shedd	39x61x10	1,940	168	110	48	52	150	100	—
Shedd A	39x30x10	1,070	72	40	24	26	75	50	—
Shedd B	27x31x10	870	72	50	24	26	75	50	—
Marina City	35x24x10	894	88	54	20	24	90	60	—
Water Tower	76x31x10	2,304	196	122	60	60	180	120	—
Water Tower A	41x31x10	1,255	110	66	30	34	90	60	—
Water Tower B	34x31x10	1,041	82	46	24	28	90	60	—
Great Lakes Ballroom	168x149x24	24,997	2,700	1,548	—	—	2,100	1,950	1,670
Great Lakes Ballroom A	45x63x24	2,790	225	153	—	—	180	240	180
Great Lakes Ballroom B	52x63x24	3,291	275	228	—	—	240	290	220
Great Lakes Ballroom C	51x63x24	3,205	275	183	—	—	240	260	200
Great Lakes Ballroom D	149x34x24	5,192	375	234	—	—	400	260	240
Great Lakes Ballroom E	45x69x24	3,120	225	153	—	—	225	200	180
Great Lakes Ballroom F	52x69x24	3,620	275	189	—	—	300	250	210
Great Lakes Ballroom G	51x69x24	3,620	275	183	—	—	300	220	190
Great Lakes Ballroom A/B	97x63x24	6,081	625	324	—	—	420	480	420
Great Lakes Ballroom B/C	104x63x24	6,497	650	384	—	—	480	560	500
Great Lakes Ballroom E/F	97x69x24	6,739	525	324	—	—	525	470	420
Great Lakes Ballroom F/G	104x69x24	7,240	575	342	—	—	600	520	460
Great Lakes Ballroom A/B/C	168x63x24	9,286	950	600	—	—	660	820	710
Great Lakes Ballroom E/F/G	168x69x24	10,360	850	507	—	—	825	730	640
Great Lakes Ballroom A/B/C/D	168x98x24	14,478	1,500	936	—	—	1,060	1,240	990
Great Lakes Ballroom D/E/F/G	168x104x24	15,551	1,475	882	—	—	1,225	1,210	1,000
Great Lakes Ballroom Foyer	—	7,897	—	—	—	—	900	—	—
Algebra	26x18x9	474	—	—	12	—	—	—	—
Analysis	37x23x9	837	66	42	26	30	75	50	—
Anthropology	33x19x9	615	61	35	20	23	45	30	—
Architecture	38x23x9	885	74	42	28	31	75	50	—
Astronomy	33x18x9	612	69	35	24	27	60	40	—
Biology	29x23x9	640	69	39	18	21	45	30	—
Calculus	37x23x9	832	90	52	26	29	75	50	—
Chemistry	26x18x9	474	—	—	12	—	—	—	—
Culture	23x37x9	837	80	47	26	28	75	50	—
Dance	33x19x9	615	63	34	24	25	45	30	—
Geography	23x36x9	845	90	47	28	30	75	50	—
Geology	33x18x9	612	56	34	22	24	45	30	—
Integrals	21x29x9	640	76	31	18	21	45	30	—
History	23x37x9	729	98	53	26	29	75	50	—
Literature	21x31x9	729	78	38	20	24	45	30	—
Journalism	23x38x9	838	97	54	26	29	75	50	—
Philosophy	40x18x9	716	68	40	28	26	60	40	—
Music	23x18x9	400	—	—	12	—	—	—	—

## LEVEL 2



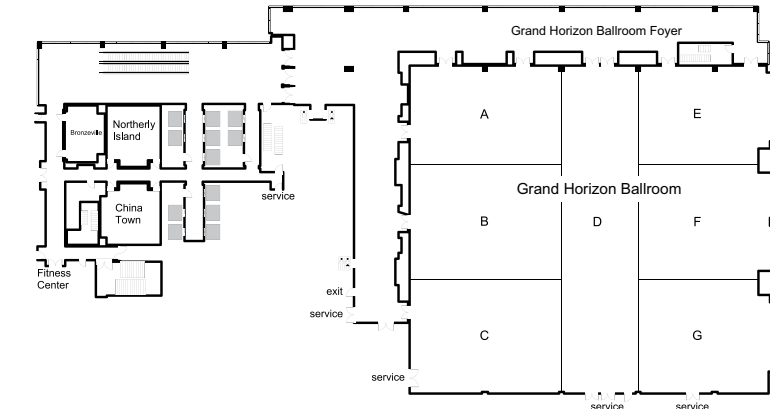
## LEVEL 3



## LEVEL 3

Meeting Room	DIMENSIONS			CAPACITY					
	Dimensions (LxWxH)	Area (Sq. Feet)	Theater	Schoolroom	Conference	U-Shape	Reception	Banquet (No Stage)	Banquet (With Stage)
Glessner House	117x29x10	3,285	349	201	102	—	300	170	—
Glessner House A	23x29x10	649	62	38	18	—	60	40	—
Glessner House B	58x29x10	1,549	142	75	42	39	90	60	—
Glessner House C	40x29x10	1,195	97	50	30	23	75	50	—
Glessner House A/B	140x29x10	2,198	204	113	60	51	150	100	—
Glessner House B/C	99x29x10	2,744	239	125	72	56	165	110	—
RR Donnelley	28x24x10	662	51	28	18	21	60	40	—
Marshall Field	27x27x10	714	49	32	18	22	60	40	—
William Kimball	26x16x10	348	—	—	12	—	—	—	—
John Hancock	27x24x10	635	45	24	16	20	60	40	—
George Pullman	43x31x10	1,364	108	67	32	38	120	80	—
Henry Clarke	43x31x10	1,355	108	67	32	38	120	80	—
Daniel Burnham	49x33x10	1,563	170	108	38	44	150	100	—
Daniel Burnham A	25x33x10	820	91	48	22	23	75	50	—
Daniel Burnham B	23x33x10	734	66	36	22	23	60	40	—
Physics	26x18x9	473	—	—	12	—	—	—	—
Physiology	37x23x9	836	80	47	26	28	75	50	—
Poetry	33x19x9	615	63	34	24	25	45	30	—
Probability	38x23x9	846	90	47	28	30	75	50	—
Science	33x18x9	612	56	34	22	24	45	30	—
Statistics	29x21x9	640	76	31	18	21	45	30	—
Sports	37x23x9	831	98	53	26	29	75	50	—
Theater	31x25x9	729	78	38	20	24	45	30	—
Technology	38x23x9	838	97	54	26	29	75	50	—
Trigonometry	38x18x9	715	68	40	28	26	60	40	—
Zoology	23x18x9	401	—	—	12	—	—	—	—

## LEVEL 4



## LEVEL 4

Meeting Room	DIMENSIONS			CAPACITY					
	Dimensions (LxWxH)	Area (Sq. Feet)	Theater	Schoolroom	Conference	U-Shape	Reception	Banquet (No Stage)	Banquet (With Stage)
Grand Horizon Ballroom	168x149x29	24,963	2,700	1,548	—	—	2,100	1,950	1,670
Grand Horizon Ballroom A	45x63x29	2,788	225	153	—	—	180	240	180
Grand Horizon Ballroom B	52x63x29	3,221	275	228	—	—	240	290	220
Grand Horizon Ballroom C	52x63x29	3,221	275	183	—	—	240	260	200
Grand Horizon Ballroom D	149x34x29	5,191	375	234	—	—	400	260	240
Grand Horizon Ballroom E	45x69x29	3,124	225	153	—	—	225	200	180
Grand Horizon Ballroom F	52x69x29	3,621	275	189	—	—	300	250	210
Grand Horizon Ballroom G	52x69x29	3,626	275	183	—	—	300	220	190
Grand Horizon Ballroom A/B	97x63x29	6,009	625	324	—	—	420	480	420
Grand Horizon Ballroom B/C	104x63x29	6,442	650	384	—	—	480	560	500
Grand Horizon Ballroom E/F	97x69x29	6,745	525	324	—	—	525	470	420
Grand Horizon Ballroom F/G	104x69x29	7,247	575	342	—	—	600	520	460
Grand Horizon Ballroom A/B/C	168x63x29	9,230	950	600	—	—	660	820	710
Grand Horizon Ballroom E/F/G	168x69x29	10,371	850	507	—	—	825	730	640
Grand Horizon Ballroom A/B/C/D	168x98x29	14,421	1,500	936	—	—	1,060	1,240	990
Grand Horizon Ballroom D/E/F/G	168x104x29	15,562	1,475	882	—	—	1,225	1,210	1,000
Grand Horizon Ballroom Pre-Function	—	8,095	—	—	—	—	900	—	—
Northerly Island	28x24x10	662	51	28	18	21	60	40	—
Bronzeville	26x16x10	393	—	—	12	—	—	—	—
China Town	27x24x10	701	49	32	18	22	60	40	—