

# ART COLLECTION GUIDE



VEA

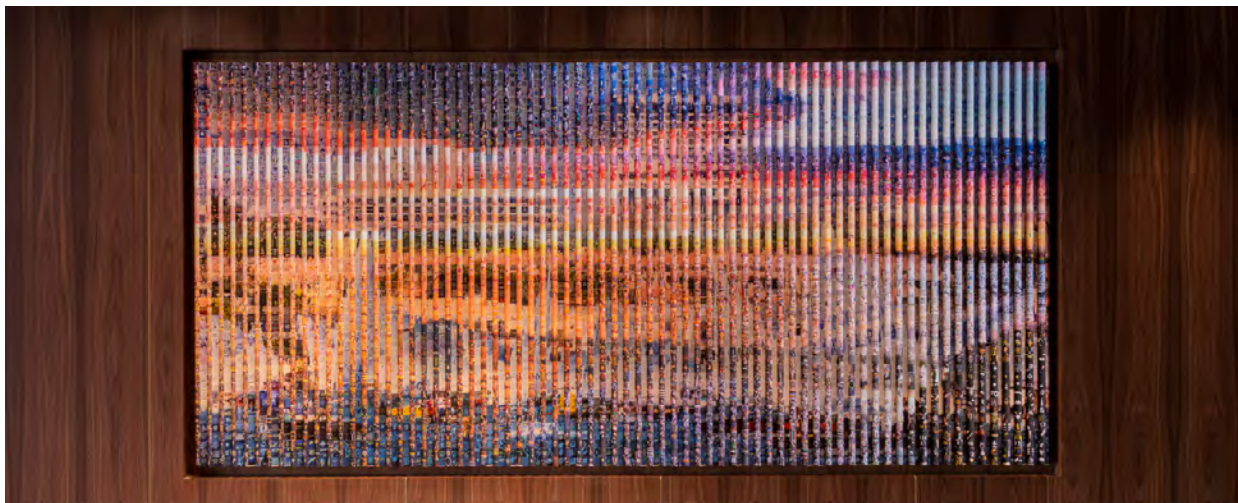
NEWPORT BEACH

A MARRIOTT RESORT & SPA

## ART AT VEA NEWPORT BEACH

The newly reimagined VEA Newport Beach offers a playground for the chic where revelry and relaxation mingle playfully in a pocket of Southern California perfection. With sweeping views of the coastline, VEA basks you in all the luxurious must-haves including emergent food and drink, a lush spa enclave, and a spirited poolscape that goes from dawn to dusk.

The art collection at VEA Newport Beach boasts of exceptional pieces curated by Daniel Fine Art Services. The artists selected bring a cosmopolitan perspective from across the world including Brazil, Spain, New York, London, Paris, and California. These artists were inspired by working with unique mediums inviting curiosity into the viewing experience.



## **Collapse**

by Irene Mamiye

Irene Mamiye is a New York based artist who incorporates various digital imaging techniques into her photography and video work. For the VEA property she was commissioned to work with two iconic Newport Beach landmarks. The artist used the Newport Pier and the Newport Harbor for her images. Mamiye amassed hundreds of internet sourced images used to construct the piece of art before you. Her aim is to illuminate and abstract the changing relationship between artistic process and output, and extend both the material and philosophical idea of photography into new realities. As the viewer moves from left to right respective of the artwork, also known as a lenticular, they are met with changing scenery and a carefully crafted visual dynamism.



## **Not Every Representation Of The World Will Do**

by Jacob Hashimoto

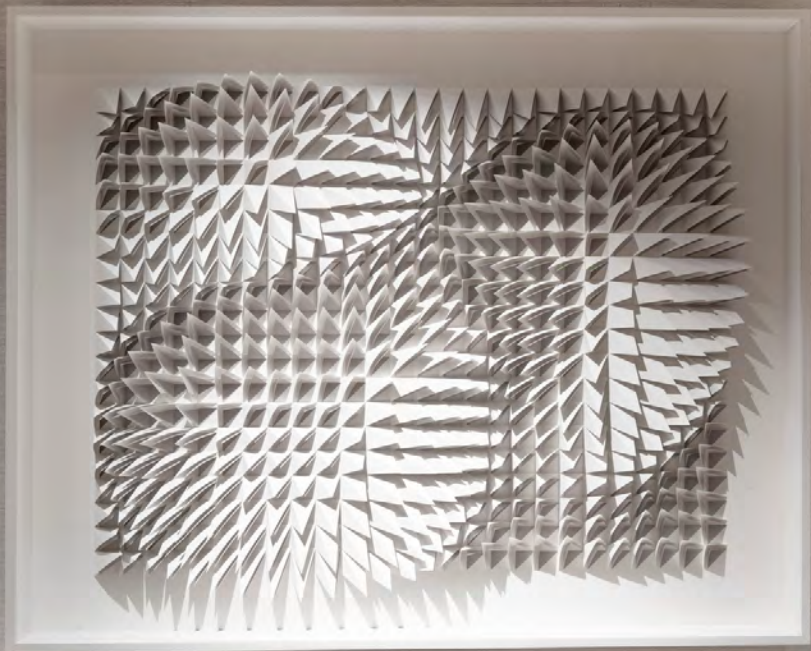
As VEA is seen as for its fusion of cosmopolitan and California coastal vibe, our art collection is anchored with a dimensional wall sculpture by Jacob Hashimoto who is an American artist based in New York City. Using sculpture, painting, and installation, Hashimoto creates complex worlds from a range of modular components: bamboo-and-paper kites, model boats, even astroturfcovered blocks. His work can be found in the collections of the Los Angeles County Museum of Art, the California Endowment, the Microsoft Art Collection, and the Capitol One Collection, among others.



## Elan's Curiosities

The VEA brand muse, Elan is defined by her enthusiasm for not only living well, but joyfully. A captivating personality, she epitomizes vibrancy, panache, and confidence. Elan spends her time traveling the world and with her bon-vivant spirit, and interest in art and design, she finds unique curiosities of art and artifacts along the way. The collection displayed are some of her special finds during her travel to France, Italy, Greece, Spain, Canada, and the U.S. West Coast.





Small informational label with a QR code.

## **Untitled #139**

by Anna Kruhelska

As part of VEA's international art collection, Anna Kruhelska is a visual artist and practicing architect based in Lodz, Poland. Kruhelska focuses on abstract, three-dimensional paper wall reliefs that work by reflecting light – with the overall effect dependent on the viewer's perspective. The central concept of her work is the interplay between light and shade, contrast, and the repetitive patterns created by the folds and hollows in the work. Inspired by minimalism, architectural composition, geometry, and origami, Anna creates clean, crisp, often white-on-white framed wall installations.

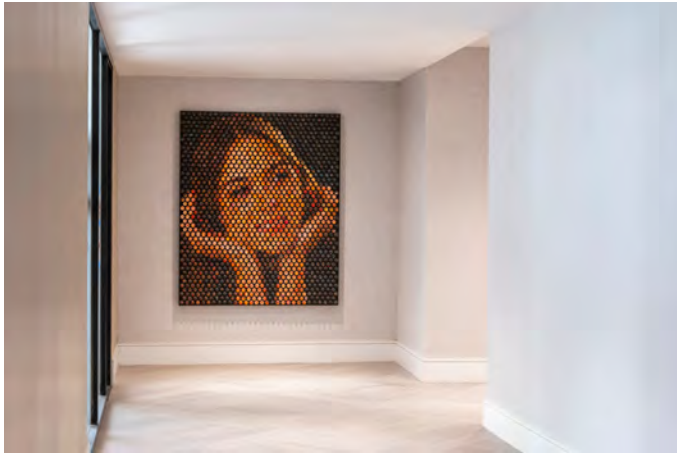


## **Affect**

by Justin Teilhet

We chose Justin Teilhet's wood carved wall paintings for his unique ability to represent our California coastal waters with their angulating layers in rich deep blue tones. Teilhet has been designing and creating works in Yellow Springs, Ohio for over 25 years. The common thread through all of his work has been fired clay, spending nearly a decade working exclusively in English porcelain. In recent years the focus has shifted to mixed media incorporating steel, wood, and resin. The work is created entirely by hand without the use of any digital or automated equipment. His latest evolution is large scale wall installations. He is featured in multiple permanent collections throughout the U.S. "I consider this body of work to be an example of composition through density, similar to that of pointillism. Relying on repetition and progression as my guiding design principles"

Elevator Corridor



## **Commission of Elan**

by Nemo Jantzen

Nemo Jantzen's exploration of perception and perspective mixes photography, pointillism, and pop art to create mixed media photo-compositions that question and deconstruct pop culture and mass media. For this reason, we've chosen Jantzen to create an artistic feature piece of our ideal muse, Elan. As one looks closely at each dot, there is an image of a place, person, or object, symbolizing memories of Elan's world travels. Stepping back far enough, one can visually see the face of the muse, Elan. Nemo Jantzen, born in The Hague, studied art, design and photography at the RTO Art Academy in Rotterdam.



## **Twister**

by Galen Gibson-Cornell

Galen Gibson-Cornell, born in Missouri, demonstrates a professional and cultural fascination with cities focusing on creative projects, to name a few: Plovdiv, Bulgaria; Buenos Aires, Argentina; Berlin; Budapest, Hungary. He is a visual artist working with a practice that combines urban exploration and found-material collage. An itinerant traveler, he explores cities on foot, studying the layers of "urban skin" - the posters, flyers, and paper advertisements covering walls and signboards. Then he returns to his Philadelphia studio in order to deconstruct the found materials, thoughts, and experiences into dimensional, meditative, and colorful works.





## **Fake Abstract Commissions 1-4**

by Lino Lago

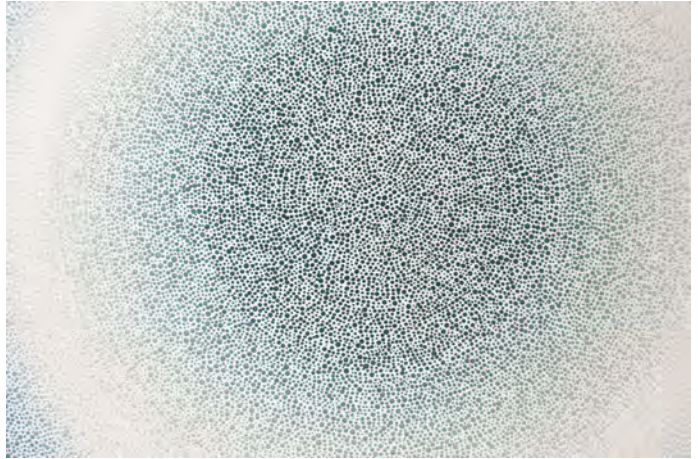
When entering the Member's Lounge one will see an interesting dialogue between past and present. The four Lino Lago works explore vivid color combination of street art and classical portrait painting. Lago's work displays a dialectical point of view about reality, contrasting abstract with figurative. His artwork is in prominent collections such as of the Harvard Business School, the Flint Institute of Arts, MEAM Art Museum, Barcelona Fundacion Abanca Bank amongst many others. Lago is a visual artist based in Spain and Lithuania.



## **The Siren**

by Roark Gourley

Celebrating local Southern California artist, we chose Roark Gourley, an American painter, sculptor, and mixed media artist living in Orange County. His work is in countless private collections as well as in the Smithsonian Museum. With the use of modern media techniques, Roark has developed his own proprietary lighting style known as Liquescent. Liquescent allows you to see what the naked eye can not - movement that is fluid, flowing, unrestricted and graceful.



## **Break Away and Flourish**

by A.J. Oishi

A.J. Oishi born in Seattle is a self-taught painter specializing in abstract pointillism. Rooted in a fascination with color, geometry and the artistic process, Oishi's work is created using paint on the eraser side of a #2 pencil in a deliberate, pointillist approach. By adding thousands of dots together and using specific color combinations, a meditative experience is presented to the viewer. Oishi has enjoyed participating in shows around the nation in San Francisco, New York, Miami, and Boston, and is represented by several fine art galleries throughout North America.



## **Solar Trees VI**

by Scott Troxel

Scott Troxel is an American sculptor living in Philadelphia, PA. His work has been exhibited at numerous fairs across United States and private collections in Canada, Europe, and South America. His work draws on the aesthetics of bygone technology and the forward-looking designs of the Atomic Age and mid-century modernism to make dynamic, retrofuturist wooden sculptures.





## **Electric Sun Gaze, VEA Newport Beach**

by Sadie Drucker

Sadie Drucker is a local artist born and raised in Orange County whose love of art and travel has taken her all over the world. She easily relates to the muse, Elan. For that reason, Sadie was commissioned to create an artistic expression of the muse in a playful, colorful way celebrating a moment in time on the property. As Elan puts on her sunglasses, one sees what she sees, the ferris wheel from the Newport Fun Zone as she is standing near the VEA pool. Sadie has a multitude of different styles and mediums, and has a passion for surrealism. She received her Bachelors of Fine Art, with a focus in drawing and painting from California Institute of Art and continues to manifest and express her style in her studio in Laguna Beach.



## RENEW YOUR *VIEW*

Thank you for viewing the art collection at VEA Newport Beach. We hope you enjoyed learning more about each artist's outlook and inspiration behind their work. Please come see us again soon.



VEA

NEWPORT BEACH

A MARRIOTT RESORT & SPA

900 Newport Center Drive, Newport  
Beach, California, USA, 92660  
1 949-640-4000



@VEANewportBeach

VEANewportBeach.com